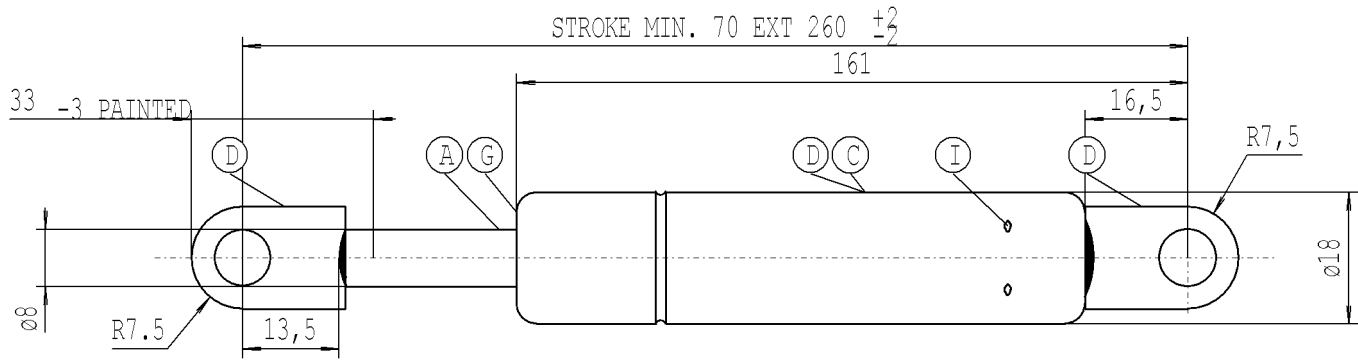


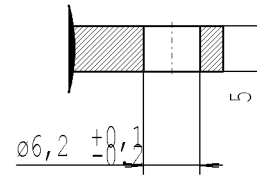
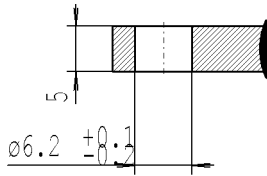
We reserve all rights to this drawing, to any patents or patent registrations related hereto, and to the duplication, retransmission by third parties and misc. use. Any use of this drawing is not permitted without the written consent of STABILUS.

Intended for internal use and customer

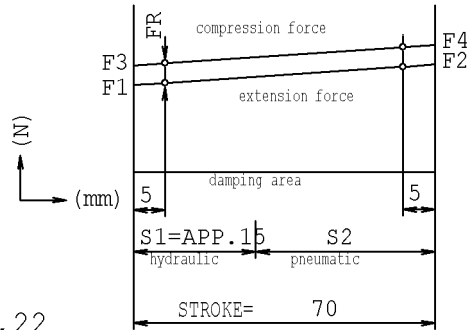


STABILUS LIFT-O-MAT FR

NICHT OEFFNEN HOHER DRUCK
DO NOT OPEN HIGH PRESSURE
STABILUS STANDARD



- The warning label must not be removed or obscured.
- The gas spring must not be mechanically modified or damaged.
- compression and extension forces measured acc. to STAB-Spec. 10009033
- Spring test with piston rod downwards
- Protect piston rod from dirt, paint and damage
- Disposal acc. to STAB-Spec.10009375
- Drawing not true-to-scale
- Observe installation instructions according to STAB-Spec. 10005593
- Permissible operating temperature range -30°C to +80°C
- Structural member test gas spring acc. STAB-Spec. 10010035
- Extension speed: no damping
- Installation with piston rod downwards



A | Nislidie black
 C | print white
 D | black painted
 G | border flange oiled
 I | dinks permissible

Unregistered Copy
 Print-out is not subject to the modification service

$X = F2 / F1 = 1,22$
 $FR_{max} = F3 - F1$

CHANGE	NEW	
	OLD	
	CHG.NO.	
	NAME	
	NO.	

STABILUS

Modifications in favour of technical process reserved

Forces (statically measured)		
F1 (N)	F4 max (N)	FR max (N)
extension force	compression force	friction
550 ± 30	930	120 ± 60

DIMENSIONS WITH-OUT TOLERANCE

LIFT-O-MAT FR

03 60 0816 10 071

DRAWING CHECKED

DATE 11.07.1994 NAME TOUSCH

Document No. 10001310

579113 E